

Registration

Bruno 7/25/2008

Goal

- Register and merge the MR Data sets
- Register and merge the CT and MR merged

Approaches

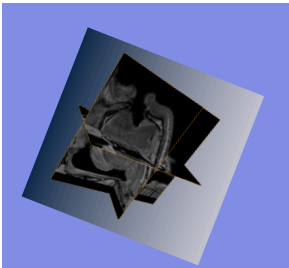
- AffineRegistration Amira
- Lanczos and Standart Interpolation (Merge the data sets) Amira

➔ MR Registration

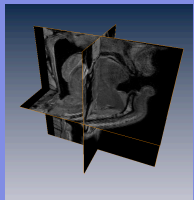
Registration

Initial Position

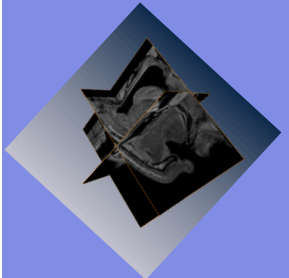
Sagittal - High
Axial - Low
Coronal - Low



Sagittal - Low
Axial - High
Coronal - Low



Sagittal - Low
Axial - Low
Coronal - High



Optimizer

AffineRegistration

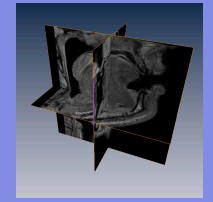
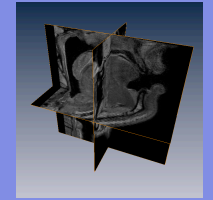
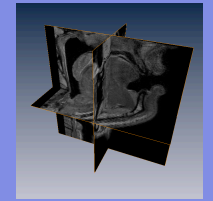
AffineRegistration

Reference
PD_Axial

Metric
Normalized Mutual
Information

Apply A,T,S

Final Position



S - Scale

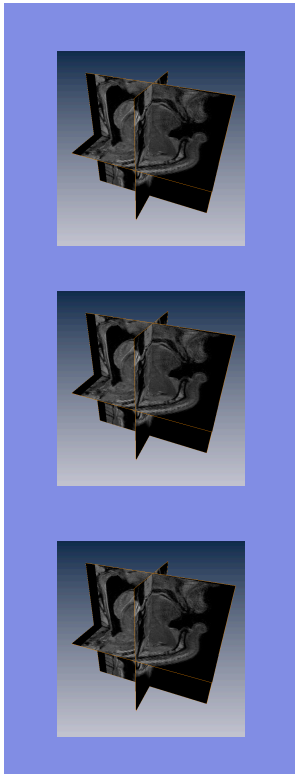
A - Rotation

T - Translation ²

➔ MR Registration

Merge

Aligned
MR



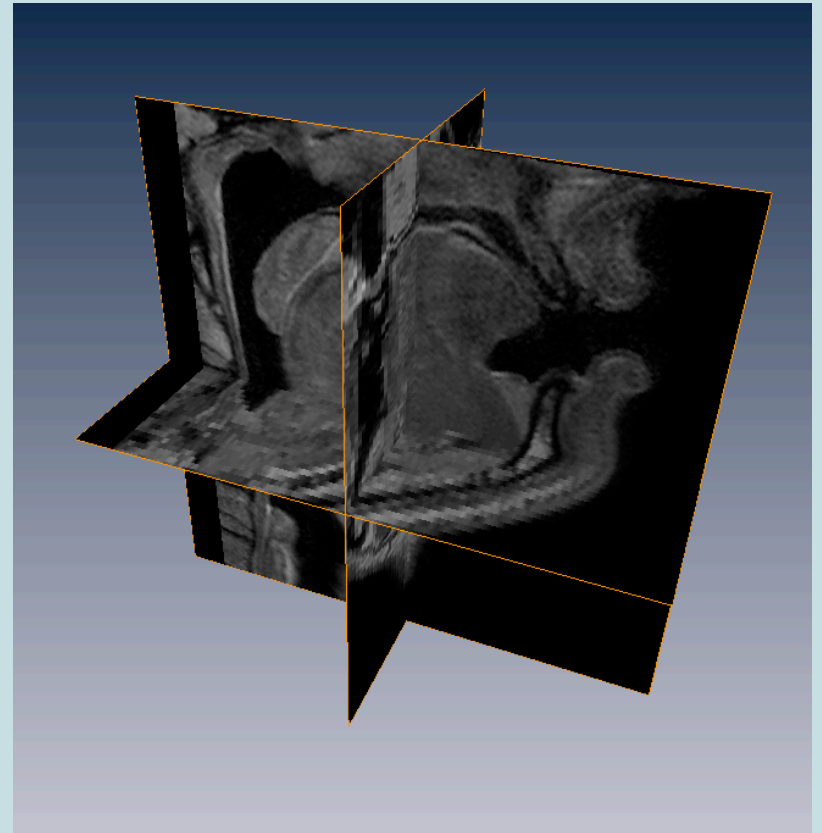
3

Resample

Reference
PD_Axial

4

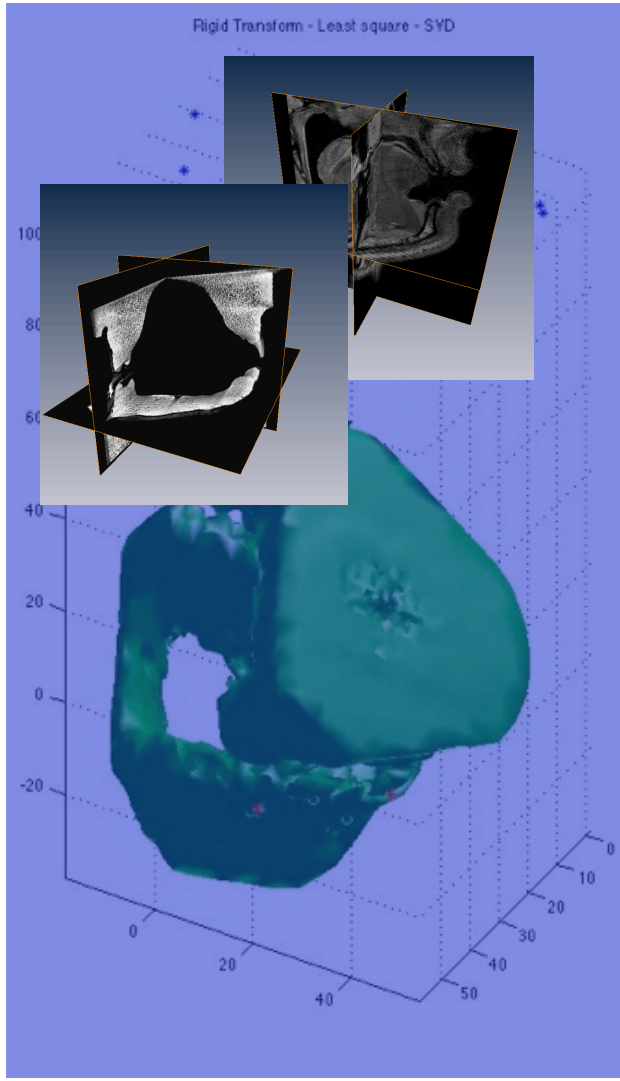
Interpolation



5

➔ Cast Merge

Merge



- * MODEL - MRI
- * DATA INITIAL - CT
- * DATA RESULT - CT

Standart Interpolation



Results

Future Work

- ➡ Merge using ITK
- ➡ Include semi-automated registration in ArtiSynth
- ➡ Fully-automated cast registration